

by Honeywell

Description

The INX Intelligent Network Transponder is a component of the E3 Series[®] Expandable Emergency Evacuation System and E3 Series[®] Broadband Audio Evacuation System. The INX transponder serves as the point of distribution for the system's audio and fire fighter telephone risers. The INX occupies a single node on the E3 Broadband network and is connected by a single pair of unshielded, twisted wires, fiber-optic cable or any combination of the two. Each E3 Broadband node can be spaced on the network up to a maximum distance of 3,000 feet (914.4 m) or up to a 8 dB loss using fiber-optic cable. Built-in isolation at each node permits Style 4, Style 6, and Style 7 network configurations.

The E3 Broadband Audio Evacuation System is a peer-to-peer, self-regenerating, token ring network comprised of up to sixty-four (64), individual nodes. In addition, the Addressable Node Expander (ANX) board expands the network to one hundred and twenty-two (122) nodes.

The E3 Broadband employs proven technology and extends it to accomplish emergency voice evacuation, 2-way Fire Fighter communications, and building control applications. It is unique in the industry since it requires only a single pair of wires or fiber-optic cable connections between nodes to convey all fire alarm, digital voice, fire fighter communications, paging, and building control signals. This system provides a 16 message capacity with up to a 3 minute duration per INX. Messages are easily field-configurable with a laptop computer

A typical INX assembly consists of the following:

- an Intelligent Network Interface-Voice Gateway (INI-VGX) module
- a PM-9/PM-9G power supply
- up to four (4), AM-50 Series amplifiers including a minimum of one (1) backup amplifier

It is enclosed in a compact 19" enclosure capable of accommodating up to 12 A/H size batteries. The modular approach of the E3 Broadband greatly simplifies the design and the installation and allows the complete flexibility in retrofit or add-on situations. This system is ideal for a wide range of complex system applications including high-rise or campus installations.

E3 Series[®] is a registered trademark of Honeywell International Inc.

UL[®] is a registered trademark of Underwriters Laboratories Inc.

Intelligent Network Transponder

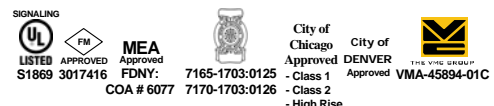


INX

Features

- IBC Seismic Certified
- Listed under UL[®] Standard 864, 9th Edition
- Offers all communication signals and control-by-event sequences over two wires or fiber-optic cable including: audio evacuation, voice paging, fire fighter intercom, and building control signals
- Integrates with INCC command centers and additional INX transponders to create a complete audio evacuation system with up to (122) nodes
- Distributed architecture, including Style 7 wiring configurations, allow system components to continue normal operation with NO loss of function during single line fault conditions
- Uses state-of-the-art digital signal processor (DSP) technology for efficient audio compression and filtering
- Software-programmable multi-channel digital audio applications
- One Style 4 signaling line circuit (SLC) supporting up to thirty-two (32), addressable speaker circuits (AOM-2SF for single channel circuits) and sixteen (16) addressable phones circuits (AOM-TELF)
- Up to 150 watts of audio power provided by the AM-50 Series amplifiers with an 50 watts of standby amplifier enclosed in a single, compact wall-mounted cabinet
- Each AM-50 Series amplifier provides two (2), individually activated speaker circuits supplying 50 watts total

An ISO 9001-2000 Company



GAMEWELL-FCI

12 Clintonville Road, Northford, CT 06472-1610 USA • Tel: (203) 484-7161 • Fax: (203) 484-7118

Specifications are for information only, are not intended for installation purposes, and are subject to change without notice. No responsibility is assumed by Gamewell-FCI for their use.

©2011 by Honeywell International Inc. All rights reserved.

www.gamewell-fci.com

9020-0541 Rev. K page 1 of 4

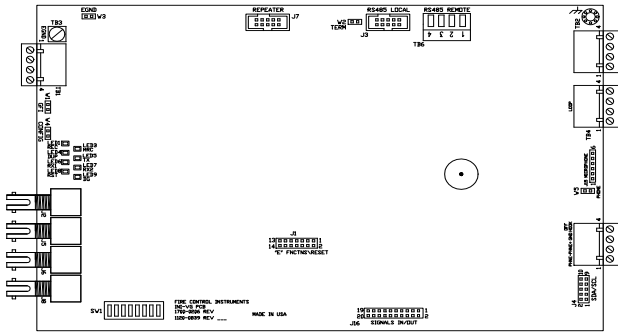


Figure 1 INI-VGX

INI-VGX

The INI-VGX is a multi-function module which incorporates the following:

- Network interface using twisted, unshielded wire or fiber-optic cable.
- Fully digital message generator.
- One signaling line circuit for local peripheral devices.
- Local fire fighter phone riser.

It occupies a single DIP switch selectable address on the network and provides termination points for the network connection using either a pair of twisted, non-shielded wire (12 AWG max.) or fiber-optic cable.

The INI-VGX uses advanced Digital Signal Processing (DSP) technology for audio compression and filtering allowing E3 Broadband to produce the clearest audio possible. Background noise is automatically filtered during voice paging and fire fighter communications which increase audibility and eliminates the need for the Push-to-Talk devices.

The INI-VGX can accommodate up to sixteen (16), different messages with a total combined duration of three minutes. Each message can be field installed via a laptop computer and the messages can be in the form of a voice message or an evacuation tone. The INI-VGX provides a fire fighter phone riser that would connect to phone jacks or warden stations through AOM-TELF modules.

The INI-VGX provides one (1) Signaling Line Circuit (SLC) to control and supervise Addressable Output Modules (AOM) serving as speaker circuits and fire fighter telephone circuits. The INI-VGX SLC can support up to thirty-two (32), speaker circuits using the AOM-2SF for single channel applications. In addition, each INI-VGX SLC can support up to sixteen (16), fire fighter intercom circuits using the AOM-TELF.

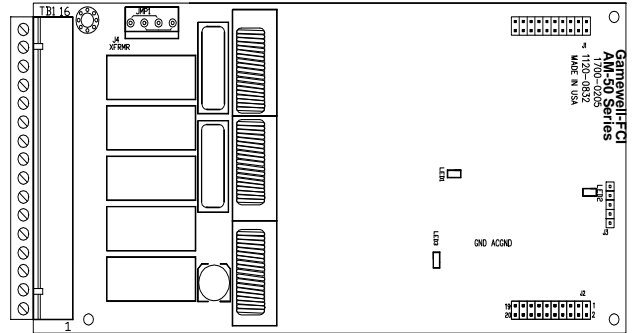


Figure 2 AM-50 Series Amplifiers

AM-50 Series Amplifiers

The AM-50 Series Amplifiers are a component of the E3 Series®, Expandable Emergency Evacuation System and the E3 Broadband Audio Evacuation System. There are two (2) types of AM-50 Series amplifiers:

- AM-50-25 amplifier produces a 25V_{RMS} audio output
 - AM-50-70 amplifier produces a 70.7V_{RMS} audio output
- Both AM-50 Series amplifiers produce 50 watt, digital, switching power. As many as four (4), AM-50 Series amplifier modules can be installed in each INX CAB-B cabinet and are supervised and controlled by an INI-VGX Voice Gateway.

Each AM-50 Series amplifier provides two (2), speaker circuits that can be wired Style Y (Class “B”) or Style Z (Class “A”). The terminal connections can accommodate up to 12 AWG, twisted-pair, shielded wire. Both speaker circuits can produce a combined 50 watt power that can be divided between the two (2), integral Class A/B speaker circuits. The two speaker circuits may be individually activated and supervised by an INI-VGX Voice Gateway.

The AM-50 Series amplifiers may be installed in an INX CAB-B cabinet or an INCC command center using the expander plates whenever the E3 control panel is used in conjunction with the E3 Series®, Expandable Emergency Evacuation System.

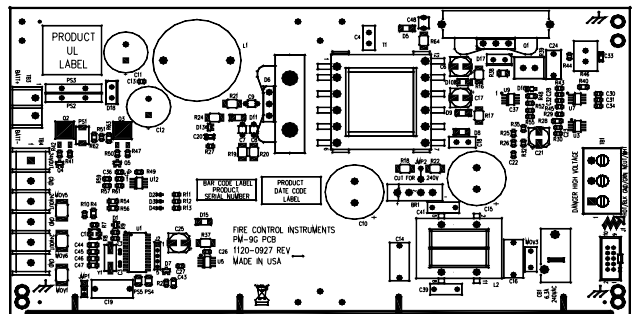


Figure 3 PM-9

PM-9

The PM-9 is a switching power supply that provides 9 amps of filtered and regulated 24 VDC (nominal) to power the INX transponder. It has an internal battery charging circuit capable of accommodating up to 55 A/H batteries as well as an auxiliary 24 VDC output @ 4.6 amps max.

GAMEWELL-FCI

Description (Continued)

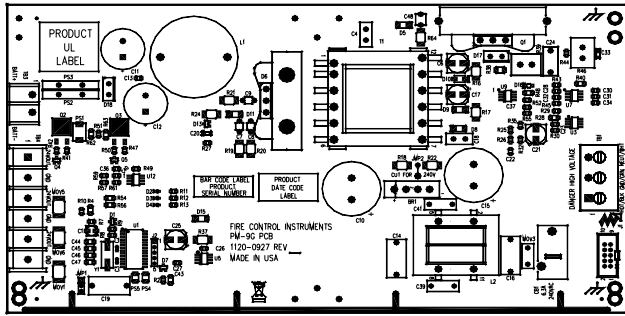


Figure 4 PM-9G

PM-9G

The PM-9G is a switching power supply that provides 9 amps of filtered and regulated 24 VDC (nominal) to power the INX transponder. It has an internal battery charging circuit capable of accommodating up to 55 A/H batteries as well as an auxiliary 24 VDC output @ 2.4 amps max.

Specifications

Description

PM-9G

Input Voltage: 240 VAC @ 50/60 Hz
Input Current: 2.4 amps max. @ 240 VAC, 50/60 Hz
Output Voltage: 24 VDC FWR
Output Current: 9 amperes Alarm max. continuous
Output Current: 5 amperes max. continuous Standby (when the PM-9G is used with the ILI-E3 or the ILI95-E3 Series) (See Note 1)
Output Current: 4 amperes max. continuous Standby (when the PM-9G is used with any AM-50 Series amplifier) (See Note 2)

Operating

Temperature: 32° to 120° F (0° to 49° C)
Relative Humidity: 0 to 93%, non-condensing at 90° F (32° C)
Supervised

Non

Power-Limited:

Note 1: Continuous standby loads in excess of .560 Amps up to 5 Amps may require a Generator Backup or load shedding during an AC power failure.

Note 2: Continuous standby loads in excess of .560 Amps up to 4 Amps may require a Generator Backup or load shedding during an AC power failure.

PM-9

Input Voltage: 120 VAC, 60 Hz
Input Current: 4.6 amps max. @ 120 VAC 60 Hz
Output Voltage: 24 VDC FWR
Output Current: 9 amperes Alarm max. continuous
Output Current: 5 amperes max. continuous Standby (when the PM-9 is used with the ILI-E3 or the ILI95-E3 Series) (See Note 1)

Specifications (Continued)

PM-9 (Continued)

Output Current: 4 amperes max. continuous Standby (when the PM-9 is used with any AM-50 Series amplifier) (See Note 2)

Operating

Temperature: 32° to 120° F (0° to 49° C)

Relative

Humidity: 0 to 93%, non-condensing at 90° F (32° C)

Supervised

Non Power-Limited

Note 1: Continuous standby loads in excess of .560 Amps up to 5 Amps may require a Generator Backup or load shedding during an AC power failure.

Note 2: Continuous standby loads in excess of .560 Amps up to 4 Amps may require a Generator Backup or load shedding during an AC power failure.

Ordering Information

Part Number	Description
INX	Intelligent Network Transponder, (Distributed Voice Network Sub-Assembly Enclosure)
INI-VGX	Transponder Voice Gateway
PM-9	INX 9 ampere Power Supply
PM-9G	INX 9 ampere Power Supply
AM-50 Series:	
AM-50-25	INX 50 watt 25 V _{RMS} audio amplifier
AM-50-70	INX 50 watt 70.7 V _{RMS} audio amplifier
Cabinets:	
INX-CAB	Backbox with Black Door
Dimensions:	INX 19" W x 19" H x 4" D (48 x 48 x 10 cm)
INX-CABR	Backbox with Red Door
Dimensions:	INX 19" W x 19" H x 4" D (48 x 48 x 10 cm)
INX-CAB-B	Backbox with louvered door and INX-CAB-B Mounting Plate
Dimensions:	19 3/8" W x 19 3/8" H x 4.5" D (49 x 49 x 11 cm)

Seismic Battery Bracket Kits

Part Number	Description
90518	NetSOLO NS-INX 7 A/H Seismic Battery Bracket Kit
90519	E3 CAB-C (INX only) 12 A/H Seismic Battery Bracket Kit E3 CAB-D (INX only) 12 A/H Seismic Battery Bracket Kit NetSOLO NS-INX 12 A/H Seismic Battery Bracket Kit

For additional information on the Seismic Battery Brackets, refer to the following documents:

- Seismic Battery Bracket Installation Guide, P/N: 53839
- E3 Series Cabinets Data Sheet, P/N: 9020-0649

GAMEWELL-FCI

12 Clintonville Road, Northford, CT 06472-1610 USA • Tel: (203) 484-7161 • Fax: (203) 484-7118

www.gamewell-fci.com

9020-0541 Rev. K page 3 of 4

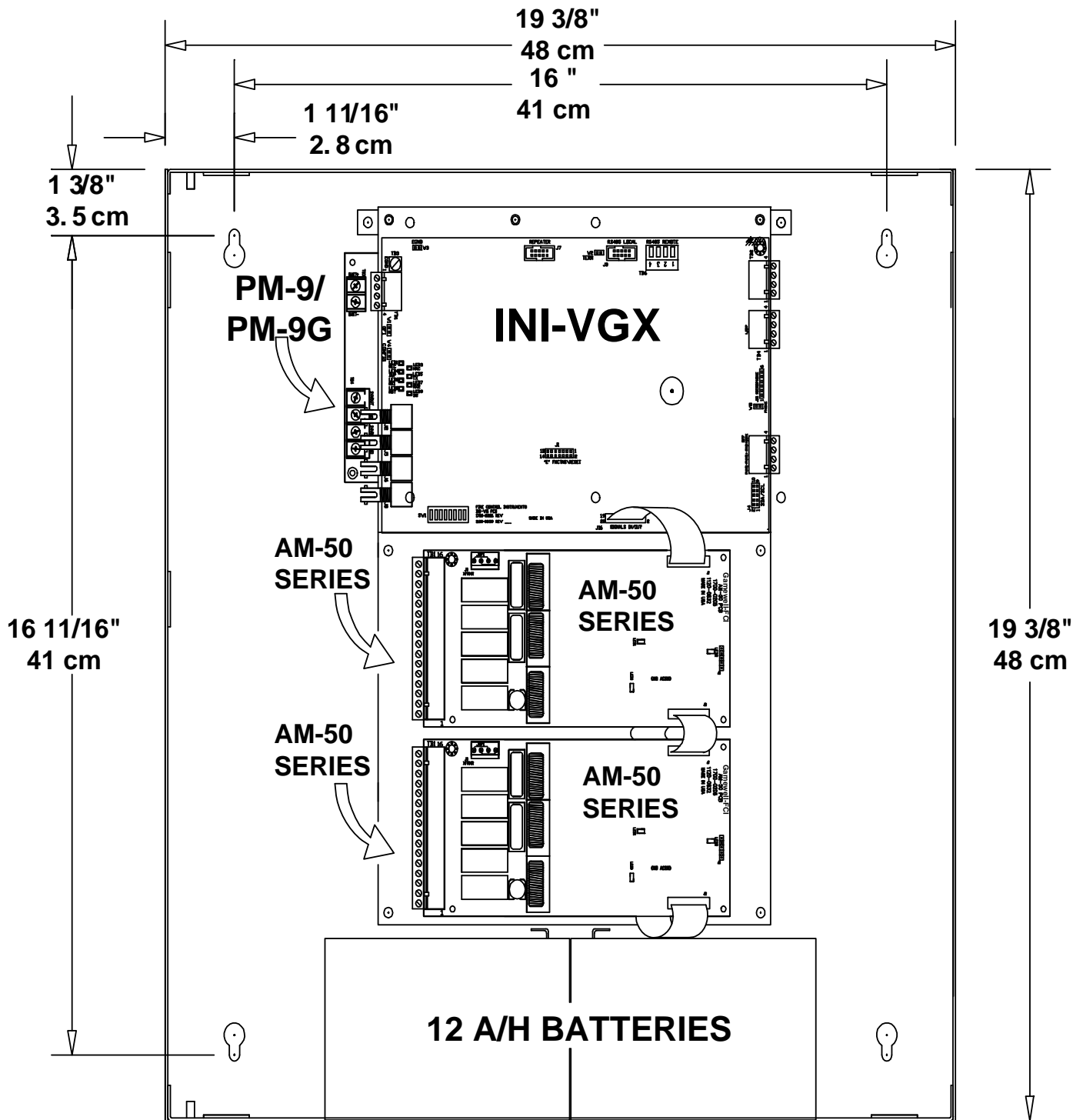


Figure 5 INX Dimensions