



by Honeywell

# FocalPoint<sup>®</sup> Graphic Workstation

## Description

The Gamewell-FCI, FocalPoint<sup>®</sup> Graphic Workstation is a PC-based graphic user interface that connects to the 7200, 7100, E3 Series<sup>®</sup> or 600 Series of fire alarm control panels via the Gateway interface. It can be connected to a proprietary or shared TCP/IP network. The FocalPoint Workstation is a high-performance industrial computer that provides text and color graphic display of fire alarm control panel network events and locations. This central command station displays systems' activities in real-time. One workstation has the capacity of simultaneously monitoring multiple FocalPoint Gateways that can be connected to the following systems:

- Standalone 600 Series • 600 Series Networks
- Standalone 7100 • 7100 NetSOLO<sup>®</sup> Networks
- Standalone E3 Series • E3 Series Networks
- 7200 Series

The FocalPoint Graphic Workstation supports a broad scope of commercial, industrial and institutional applications. The system can be configured to monitor multiple systems installed in remote locations to meet the facility requirements of multi-building complexes.

The Workstation is used as a decision support tool by facilities management and security personnel. This workstation uses graphic images to display information that allows personnel to quickly evaluate the emergency and make prompt and informed decisions. From a single screen, a workstation operator can:

- Magnify the facility map using the "zoom in" and "zoom out" feature to view floor plans or identify the location and type of multiple events.
- Monitor remote site activity and link multimedia (text, audio, video, and bitmaps) to any device.
- View the event history log on the same screen as the facility floor plans to evaluate the sequence of events.
- Print reports of system-wide events in real-time.
- Display History Manager records for operator, event, and response (with time and date stamp to disk).

E3 Series<sup>®</sup>, FocalPoint<sup>®</sup> and NetSOLO<sup>®</sup> are registered trademarks of Honeywell International, Inc.

Core<sup>™</sup> is a trademark and Intel<sup>®</sup> Pentium<sup>®</sup> is a registered trademark of Intel<sup>®</sup> Corporation.

UL<sup>®</sup> is a registered trademark of Underwriters Laboratories.

Microsoft<sup>®</sup> Windows<sup>®</sup> is a registered trademark of Microsoft<sup>®</sup> Corporation.

## PC-Based Graphic User Interface



FocalPoint Graphic Workstation

## Features

- Listed under UL<sup>®</sup> Standard 864, 9th Edition
- Flexible Remote Control - Using the workstation with the 7200 Series, E3 Series<sup>®</sup> and 600 Series, the following fire alarm functions can be activated via remote control:
  - Acknowledge
  - Reset
  - Silence
- User-Friendly System Setup - Import facility floor plans as Windows<sup>®</sup> graphic bitmaps or Windows<sup>®</sup> graphic meta files
- Secure Access - Security profiles provide multiple levels of access to different user types
- Improved System Maintenance - Reports and logs trouble events
- Automatic Screen Navigation -(selectable for each device) that locates and zooms to the device related to an alarm or event, based on the priority of the event
- Backup capability - System backups for screen, user, or history databases. All software is backed up on CD-RW
- Information Labels - Identify Hazardous Material (HAZMAT) and handicapped accessible areas using fully linked multimedia
- Optional touchscreen display for simple, intuitive interface

An ISO 9001-2000 Company

SIGNALING



LISTED  
S5526  
S5697



7300-1703:0168

### GAMEWELL-FCI

12 Clintonville Road, Northford, CT 06472-1610 USA • Tel: (203) 484-7161 • Fax: (203) 484-7118

Specifications are for information only, are not intended for installation purposes, and are subject to change without notice. No responsibility is assumed by Gamewell-FCI for their use.

©2011 by Honeywell International, Inc. All rights reserved.

[www.gamewell-fci.com](http://www.gamewell-fci.com)

9020-0647 Rev. I page 1 of 4

## Description (Continued)

Use this graphic workstation to evaluate complex situations and quickly make strategic decisions when monitoring the fire alarm control system. During an emergency, where information must be evaluated in seconds, using a small, LCD screen to navigate a fire alarm control panel is arduous and time-consuming. The Workstation greatly simplifies the management of medium to large size fire alarm control systems. Operators can use this workstation to view the status of multiple fire alarm systems and track system events in real-time from a central location.

### FocalPoint Workstation:

- Rack-mountable 2.16 GHz Intel® Core™ 2 Duo processor with 2 GBytes of RAM
- 19" (48 cm) widescreen LCD monitor, with optional touch-screen interface
- Installed with Microsoft® Windows® XP Professional SP2
- UL 864 9th Edition Listed

### Graphics:

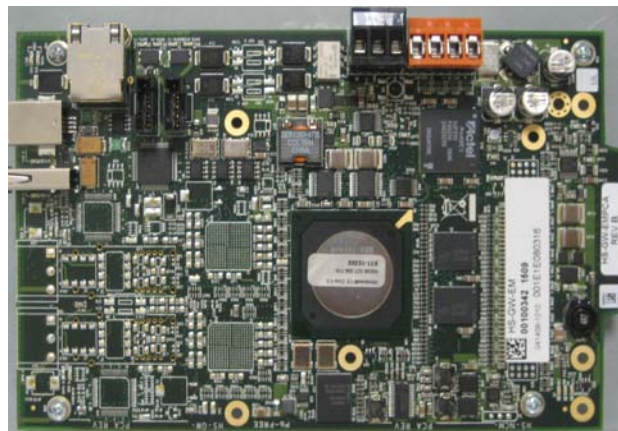
- Graphic editing mode allows on-site programming of floor plan screens, device icons, functional and navigational buttons.
- Imports the following types of converted vector drawing files from CAD floor plan drawings:
  - .WMF
  - .JPG
  - .BMP
  - .GIF
- Print graphics of floor plans and reports.
- Custom-designed, device icon colors that represent each event type.

### Minimum System Requirements:

- Intel® Pentium® IV, 2.0 GHz processor or faster
- Graphics card capable of supporting the minimum 1024 x 768 screen resolution.
- Auxiliary ports:
  - One (1), RS-232 port and serial cable for event printer operation.
  - One (1), parallel printer port for graphics printing.
  - One (1), USB port for software key.
- 1 GB RAM.
- 20 GB.
- CD-RW drive.
- Audio with speakers.
- Microsoft Windows 7 (64 bit) or Windows XP.
- Microsoft serial PS/2—compatible mouse.
- 101-key keyboard.

### Network:

- Ethernet network.



FocalPoint Gateway

### FocalPoint Gateway

The FocalPoint Gateway is a powerful interface that provides the capacity to monitor multiple networks installed in remote locations. The gateway interfaces with the 7200, 7100, E3 and 600 Series standalone and network product lines via the panel's RS-232 port. In addition, the gateway can be used to connect to the FocalPoint Graphic Workstation via a standard Ethernet TCP/IP networking. Using a wireless connection, the gateway can also transmit to the non-control, FocalPoint Mobile Workstation.

### ANX

The Addressable Node Expander (ANX) is a network interface board that is used to connect the FocalPoint Graphic Workstation and the E3 Series fire alarm control panels through the Ethernet. The ANX interface can use voice communication with text and graphics to transmit information in real-time to other systems in the network.

For additional information on the ANX, refer to Data Sheet Part Number: 9021-60497.

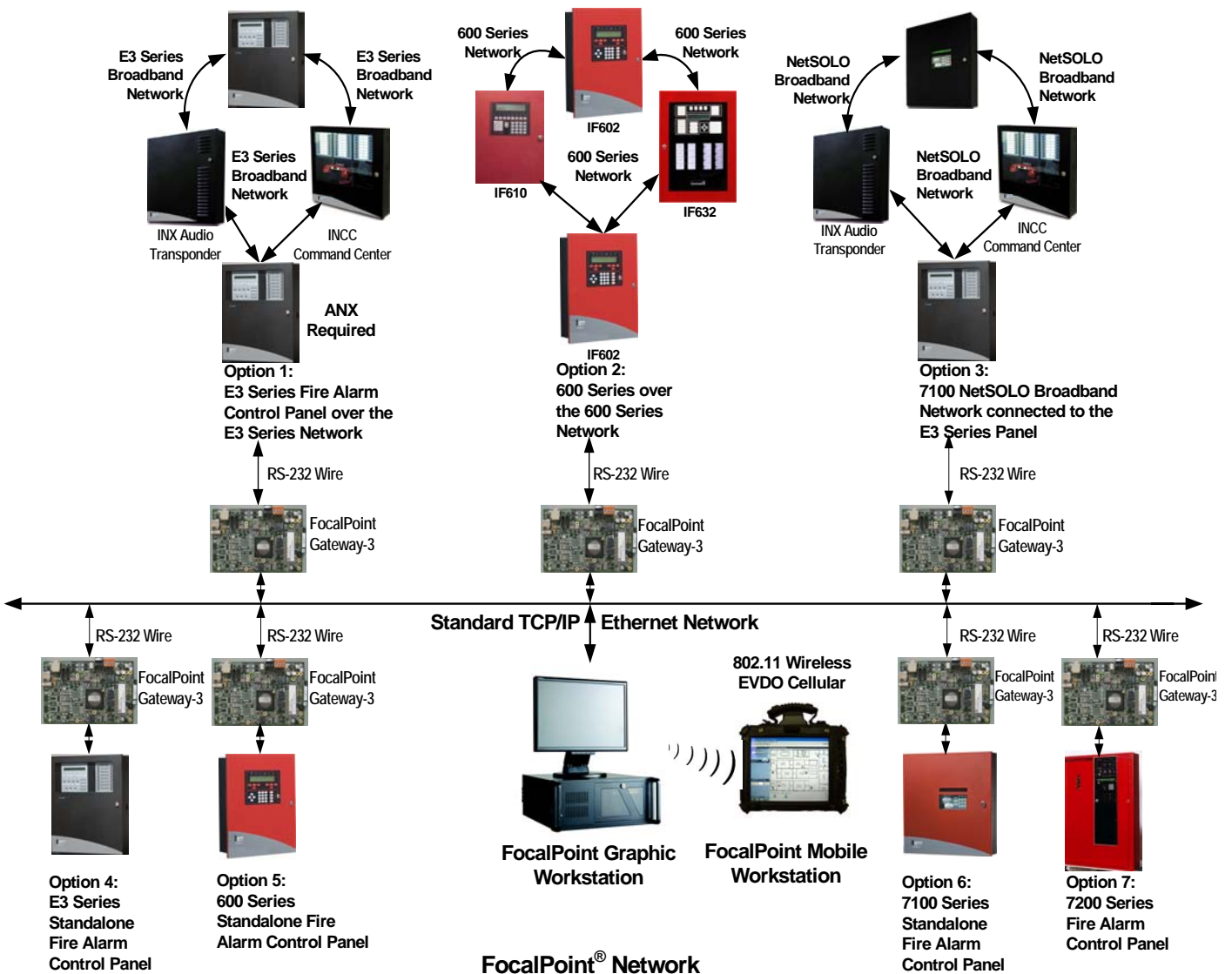
Figure 1 illustrates the adaptable, flexibility of the FocalPoint Gateway to connect to any of the following types of network installation options:

- Option 1: E3 Series network.
- Option 2: 600 Series network.
- Option 3: 7100 NetSOLO Broadband network connected to the E3 Series Panel.
- Option 4: E3 Series standalone.
- Option 5: 600 Series standalone.
- Option 6: 7100 Series standalone.
- Option 7: 7200 Series standalone.

Figure 2 illustrates the ANX integration with the FocalPoint using the Ethernet.

## Control Capabilities

Panel	Acknowledge	Silence	Reset	Enable/Disable	Comments
600 Series Standalone	Yes	Yes	Yes	Yes	
600 Series Network	Yes	Yes	Yes	Yes	
7200	Yes	Yes	Yes	Yes	Direct Connect
7100 Standalone	No	No	No	No	Monitor only
7100 on E3 Network	Yes	Yes	Yes	No	Connect through E3,7100 Series Network and must have ILI-MB-E3.
E3 Series Standalone	Yes	Yes	Yes	Yes	Enable/Disable requires ILI/ILI95-E3 Series 1.4 Firmware and FPT3.12 or greater.
E3 Series Network	Yes	Yes	Yes	Yes	Enable/Disable requires ILI/ILI95-E3 Series 1.4 Firmware and FPT3.12 or greater. ANX required for FPT 3.14 or greater.



FocalPoint®, NetSOLO®, and E3 Series® are registered trademarks of Honeywell International Inc. ©2011 by Honeywell International, Inc. All rights reserved.

Figure 1 FocalPoint Gateway Installation Options

### GAMEWELL-FCI

12 Clintonville Road, Northford, CT 06472-1610 USA • Tel: (203) 484-7161 • Fax: (203) 484-7118

[www.gamewell-fci.com](http://www.gamewell-fci.com)

9020-0647 Rev. 1 page 3 of 4

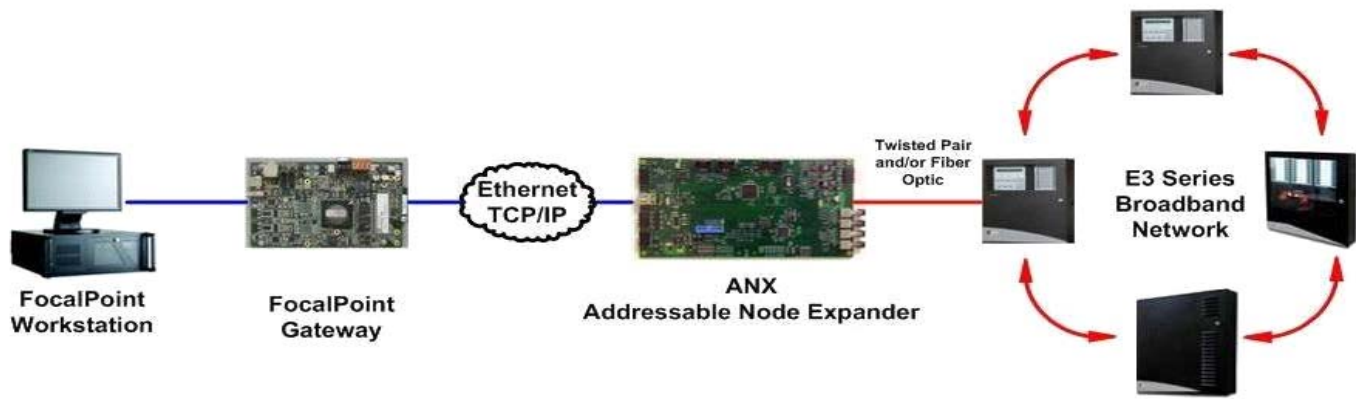


Figure 2 FocalPoint Workstation using the IP-based Addressable Node Expander (ANX) for the E3 Series Networks

### FocalPoint Graphic Workstation Screens

The FocalPoint Graphic Workstation provides the following types of graphic displays. Figures 3 and 4 illustrate the screens.

- FocalPoint Graphic screen
- FocalPoint text mode screen
- Displays system layout from CAD floor plan drawings

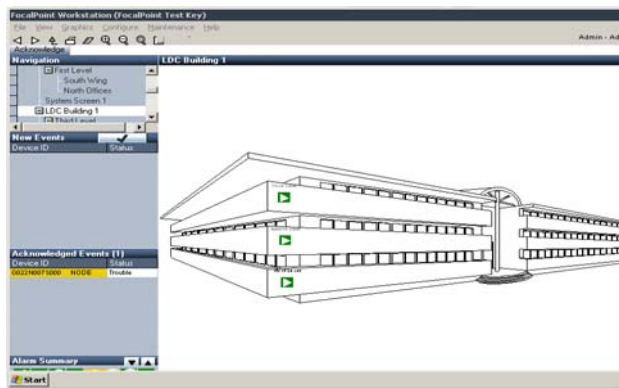


Figure 3 FocalPoint Graphic

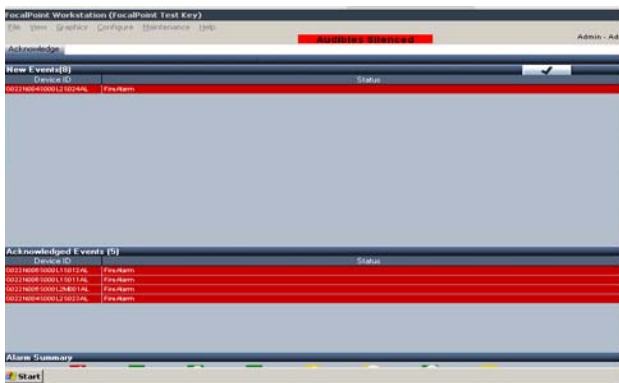


Figure 4 FocalPoint Text Mode

### Specifications

#### CPU

**Dimensions:** 19" W x 7" H x 17.7" D  
(48.3 x 17.8 x 45 cm)  
weight: 39 lbs. (17.7 kg)

#### CPU

**Electrical:** AC Input:  
(frequency 50/60 Hz),  
7.0 A @ 115 V (95-132 V),  
4.0 @ 230 V (185-264 V)

#### Monitor

**Dimensions:** 19" (48 cm) flat-screen LCD color monitor  
16.5" W x 17.2" H x 7.8" D  
(42 x 44 x 20 cm)  
weight: 15.6 lbs. (7 kg)

#### Monitor

**Electrical:** AC Input:  
(frequency 50/60 Hz auto-adjust)  
1.8 A @ 120 - 240 VAC. Power  
consumption: 43 watts (maximum)

**Gateway Cabinet** 13.25" W x 10" H x 3" D

**Dimensions:** (33.6 W x 25 H x 3.6 D cm)

#### Gateway

**Electrical:** 24 VDC input 450 mA @ +24 VDC

### Ordering Information

#### Part Number Description

- FPT-GATE-3** FocalPoint Gateway includes gateway, surge suppressor (PNET-1), cables and cabinet
- FPT-WKS** FocalPoint graphical user interface software for network annunciation. Workstation UL Listed PC included. (UL Version)
- FPT** FocalPoint graphical user interface software for network annunciation. Workstation PC not included. (non-UL Version)
- FPT-MOBILE** FocalPoint Mobile Tablet for PC used for non-control network annunciation standard hard drive (Optional)
- FPT-MOBILE-HD** FocalPoint Mobile Tablet for PC used for non-control network annunciation solid state hard drive (Optional)
- ANX-SR** Addressable Node Expander-Single Ring
- ANX-MR-FO** Addressable Node Expander-Multi-Ring Twisted-Pair
- ANX-MR-UTP** Addressable Node Expander-Multi-Ring Fiber Optic